

Pharmacognosy1: Dr. Khaled Allam

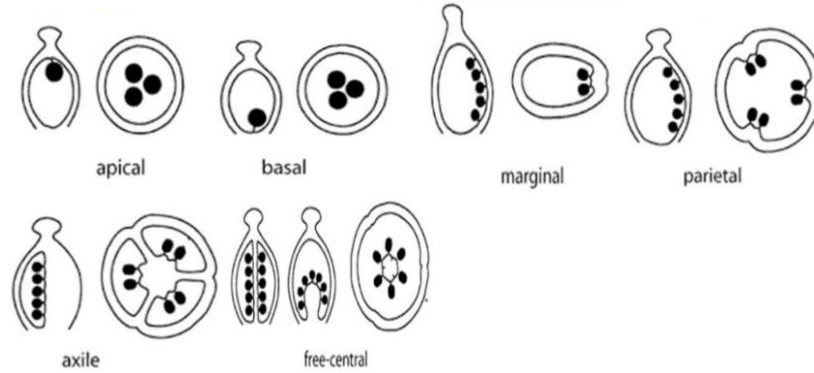
Student: Mohamed Mokhtar

ملخص الجزء الثاني من المقدمة

QUESTION	ANSWER
What is Perianth?	the term given to the outer non-essential floral parts when they are not differentiated into calyx and corolla.
How can we describe Perianth?	Petaloid: if bright colored. Sepaloid: if greenish colored.
What is the Reproductive (Fertile) Parts of the flower?	<ol style="list-style-type: none"> The Stamens: They are collectively known as the Androecium. (the male reproductive organ) <ul style="list-style-type: none"> ➤ Consists of:- <ol style="list-style-type: none"> a) Filament b) Anther (pollen-bearing portion). The Pistil: called the gynaecium. (the female reproductive organ). <ul style="list-style-type: none"> ➤ Consists of:- one or more carpels ➤ The Carpel Consists of:- <ol style="list-style-type: none"> a) The Ovary: It is the hollow enlarged basal part of a carpel or carpels and later on forms the fruit. b) The Style: It is the elongated apical part of a carpel (Ovary) and through which the pollen tubes grow. c) The Stigma: It is the expanded tip of the style and it is regarded as the receptive part of the female reproductive organs.
What is the definition of pollen grains?	<ul style="list-style-type: none"> ✓ Fine powder that is liberated on the dehiscence of the anthers. ✓ They are minute, varying in size and shape.
Each pollen grain possesses a wall of two layers: (Exine, intine)	
What is the difference between exine and intine ?	<ul style="list-style-type: none"> ✓ Exine (the outer layer of the wall) is thick and cutinised. ✓ Intine (the inner layer of the wall) is delicate and cellulosic.

What are Germ pores?	The exine may show one, two or three minute pits through one of them the pollen tube protrudes
What are Germinal furrows?	They are grooves that serve to accommodate the expansion and shrinkage of the pollen grain due to change in humidity.
What are types of pollen grains? (According to the exine layer of the wall)	<ul style="list-style-type: none"> a) The exine may be smooth as in saffron b) The exine may be with fine and coarse warts as in Datura c) The exine may be with numerous minute pits as in hyoscyamus d) The exine may be with reticulation as in Lilium e) The exine may be spiny as in pyrethrum
What is the definition of Placentation?	the arrangement of ovules in the ovary.
When there is single ovule.....	the placentation may be Basal or Apical
When there are numerous ovules.....	The placentation may be: Marginal, parietal, central (axile), or free central.
What is the description of apical?	<ul style="list-style-type: none"> ✓ Placenta is at apex of the ovary. ✓ Simple or compound carpel.
What is the description of basal?	<ul style="list-style-type: none"> ✓ Placenta is at base of the ovary. ✓ Simple or compound carpel.
What is the description of marginal?	<ul style="list-style-type: none"> ✓ There is only one elongated placenta on one side of the ovary. ✓ Simple carpel ✓ This is Conspicuous in legumes
What is the description of parietal?	<ul style="list-style-type: none"> ✓ The placentas are in the ovary wall within a non-sectioned ovary. ✓ Compound carpel.
What is the description of axile?	<ul style="list-style-type: none"> ✓ The ovary is sectioned by radial spokes with placentas in separate locules. ✓ Compound carpel.
What is the description of free central?	<ul style="list-style-type: none"> ✓ Placentas in central column within a non-sectioned ovary. ✓ Compound carpel.

Collection of (Placentation).



Important images

